

**THE RESULTS OF  
OUR SUPER  
AWESOME  
PET SURVEY**

Miss Kelly's Third Graders  
Lake Sybelia Elementary School  
May 20, 2019

There are 529 families  
in the LSE community and  
235 families responded  
to our pet survey.  
That's 44%!



68%

of Lake Sybelia families\*  
have pets.

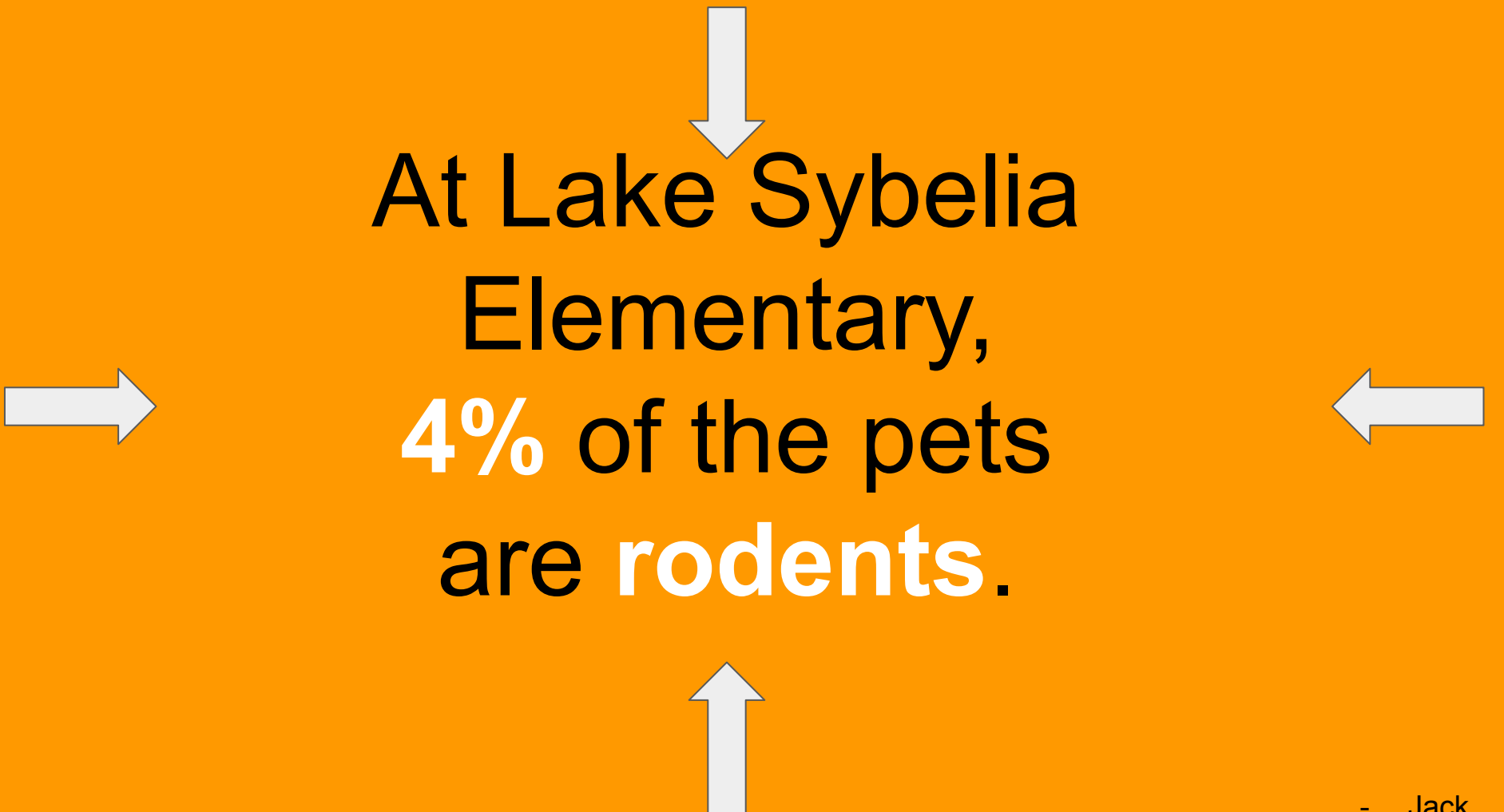
\* Please Note: Our percentages are based on the responses we received. Actual percentages may differ.

There are 485 pets in our school community.

My favorite statistic of the pet survey was that out of the 485 pets in our school community, 7% of them are birds.

That's equivalent to 35 birds!

If we had a pet show  
at Lake Sybelia,  
31% of the contestants  
in the show would be fish!



At Lake Sybelia  
Elementary,  
4% of the pets  
are **rodents.**

***THERE ARE  
162 DOGS  
IN LSE FAMILIES.***

And only 82 cats!

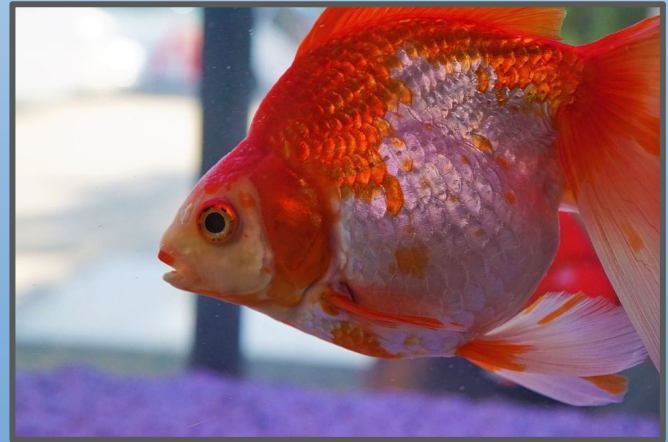




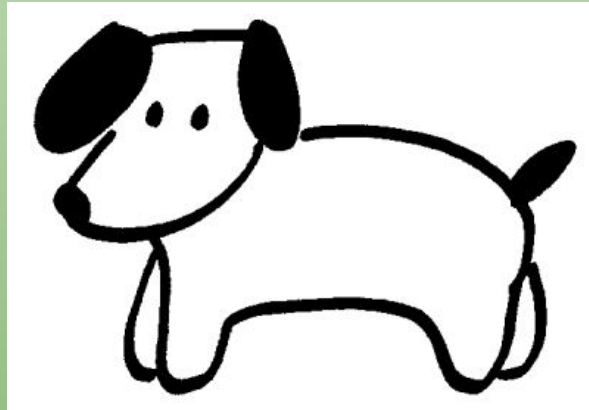
Of the people at LSE  
who have pets,  
**33%** of them  
have **dogs.**



OUT OF ALL THE FAMILIES  
AT LSE THAT HAVE PETS,  
33% HAVE DOGS AND  
31% HAVE FISH.



**OF THE 44% OF PEOPLE AT LSE WHO  
RESPONDED TO OUR SURVEY, ALMOST THE  
SAME AMOUNT HAS DOGS AS HAD FISH.**



***17%*** of the pets in the Lake Sybelia  
community are ***cats!***

***That's 82 cats!***

Besides common pets, (like dogs, cats, snakes, and rodents), in the LSE community of pets, you can also find...

... a pig.

... hermit crabs.

... a gecko.

... a bearded dragon.

... rabbits.

... chickens.

... one reptile egg.

This survey was completed by a group of **curious** third graders in April & May of 2019. It began - as many great things do - with one, simple **question**.

These fabulous third graders **read** an article about two professional organizations who tried to find out how many pets there are in the United States. In the article, **the author shared** that those two organizations came up with very different numbers. It turns out that finding out how many pets there are in the United States is a challenge, even for professionals!

This group of curious kids **decided** to try to find out how many pets there are in our school! (*Well, not IN our school, but in our school community. You get the idea.*)

We **generated** and **improved** questions.  
We **designed** and **tested** survey.  
We **asked** for help to send the survey home to 529 students.

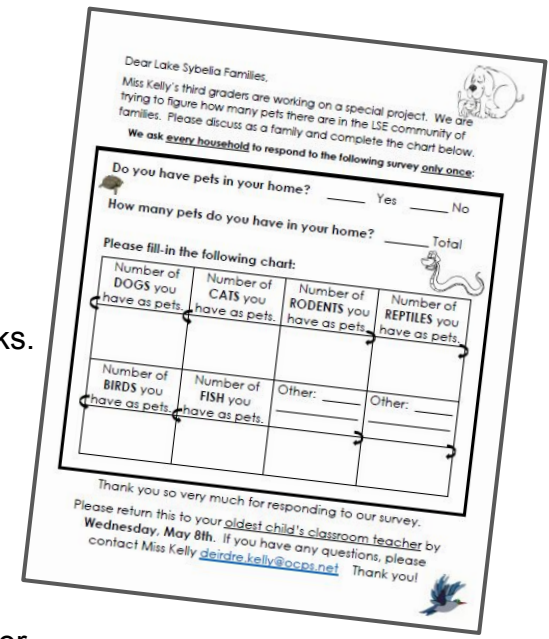
Then, we **waited** for the results to come in. We didn't have to wait long. 235 responses came back, each with at least 9 pieces of **data** on it.

We **designed a system** for **collecting** the data - with checks, double-checks, & triple-checks. We "swam around" in **data**. We tried on **percentages**. We considered **fractions**. We **solved** problems. We **discovered** mysteries. We worked in **teams**.

Our final answer? There are 485 pets in our school community.

We **THINK**.

We now **understand** why it was hard for the professionals to come up with a **reliable** answer. We now **understand** how powerful one, simple **question** can be.





@misskellylse

*Follow us.*