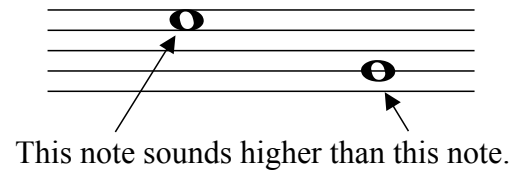
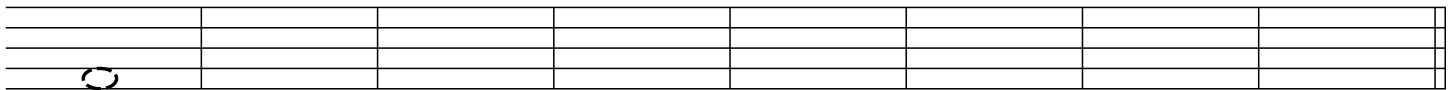


# The Staff - High and Low

Notes that are higher on the staff have a higher sound or **pitch**.

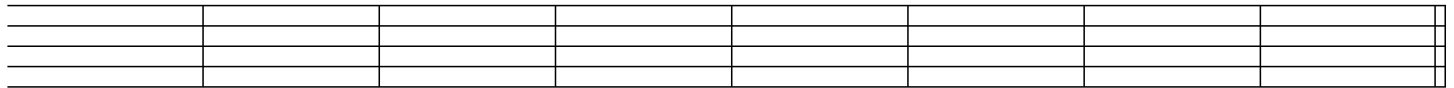


1. Draw a note on the indicated line or space, then circle the highest note you drew on the staff.



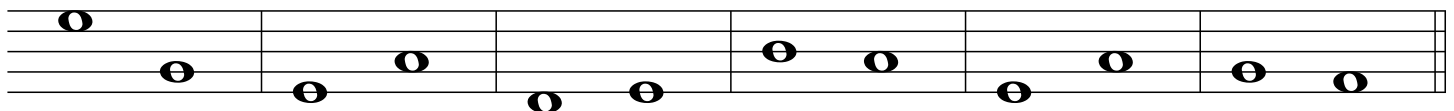
Space 1      Space 4      Line 3      Line 4      Space 1      Space 3      Line 5      Line 2

2. Draw a note on the indicated line or space, then circle the lowest note you drew on the staff.

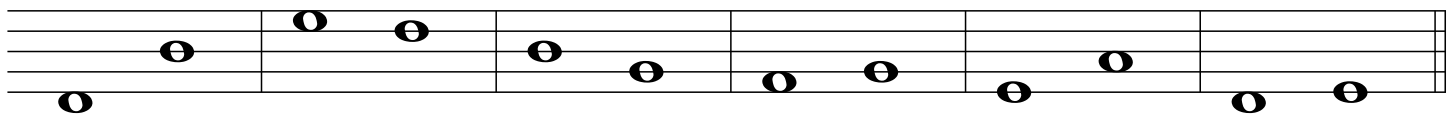


Line 5      Space 3      Line 1      Space 1      Space 4      Line 3      Line 2      Space 2

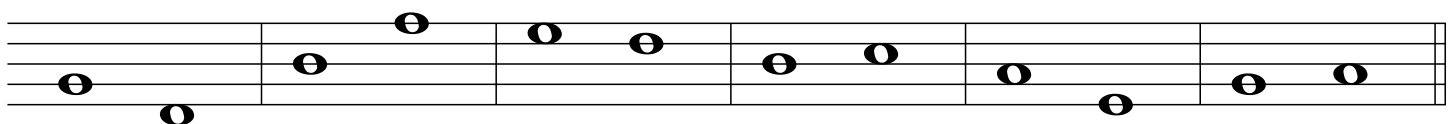
3. Circle the higher note in each pair.



4. Circle the lower note in each pair.



5. By using H (higher) and L (lower) indicate whether the first note of each pair sounds higher or lower than the second note.



\_\_\_\_\_