

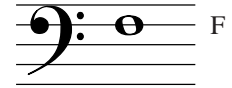


BASS CLEF

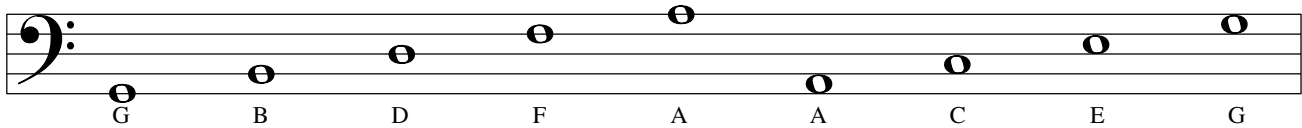
Name _____



The *bass* (pronounced “base”) clef is used for notes of lower pitch. It is also called the “F” clef because the two dots of the clef surround the line named “F” in bass staff.



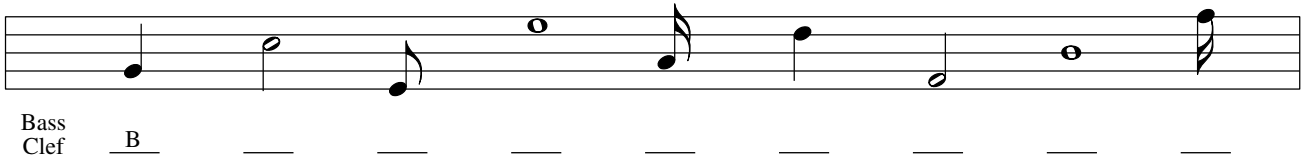
The lines and spaces of the staff have different letter names than those written in the treble clef.



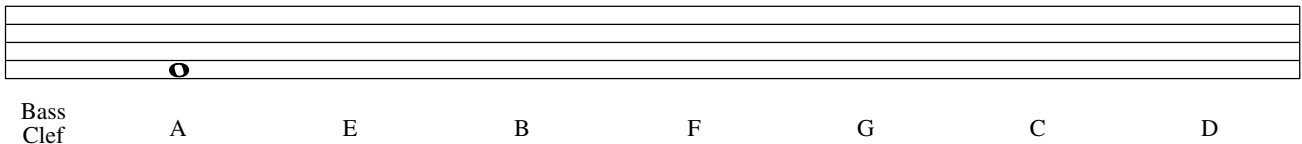
An easy way to learn the letter names of the spaces in bass clef is to remember the acronym ACEG or the phrase All Cows Eat Grass.

Write: Make up your own phrase for the letters GBDFA (the bass clef lines).

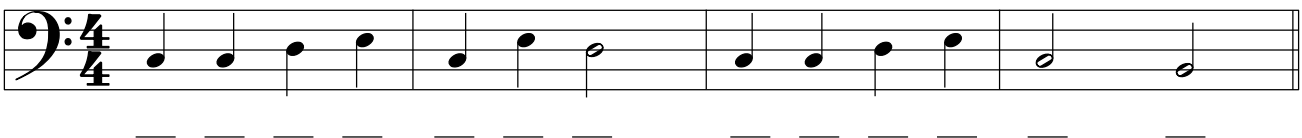
Practice: Write the bass clef sign and write the letter name of the note as indicated below.



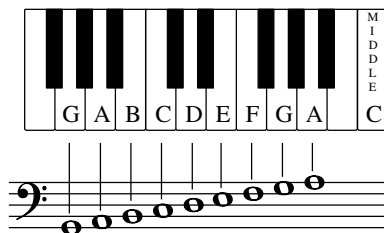
Practice: Write the bass clef sign; then write a whole note for each letter name listed below.



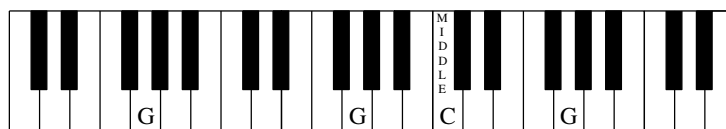
Bonus: Can you guess the tune? Write the name of the notes below the staff.



Look/Listen: The piano keyboard can help again in learning the names of lines and spaces in the bass clef. The same letters (F,G,A,B,C,D,E) used in treble clef are used in bass clef. The bass clef just organizes these letters in a different way.



Match: Put the letter on the correct key(s) of the piano keyboard shown below. "G" has been done for you.



G B D F A

Bonus: In the bass clef, what do the letters listed above represent?

Musical Spelling Test in the Bass Clef: Figure out the words created by the notes below.

