



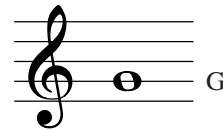
# TREBLE CLEF

Name \_\_\_\_\_

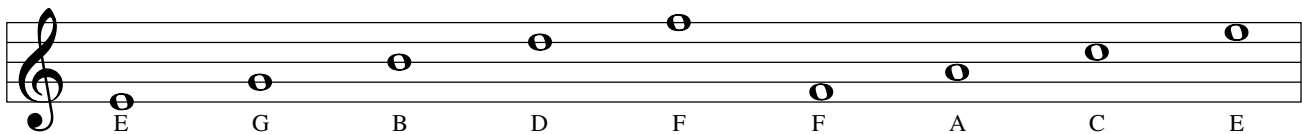


## TREBLE CLEF

The *treble clef* is used for notes of higher pitch. It is also called the “G” clef because the curl of the treble clef circles the “G” line on the treble staff.



The lines and spaces of the staff are given certain letter names when the treble clef is used.

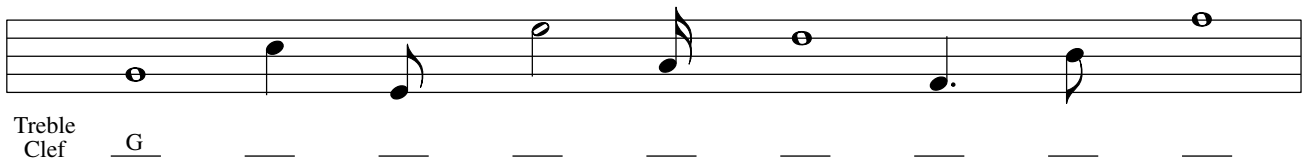


An easy way to learn the letter names of the spaces in treble clef is to remember that they spell the word **FACE** from the bottom up.

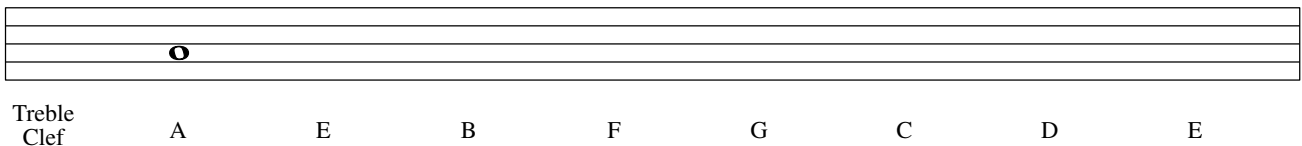
**Write:** Make up your own phrase for the letters EGBDF (the treble clef lines).

\_\_\_\_\_

**Practice:** Write a treble clef sign and write the letter name of the note as indicated below.



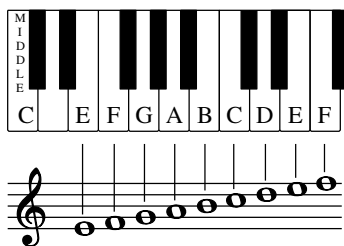
**Practice:** Write a treble clef sign; then write a whole note for each letter name listed below.



**Write:** Using the letters of the treble clef, make up as many words of any length that use only those letters: \_\_\_\_\_

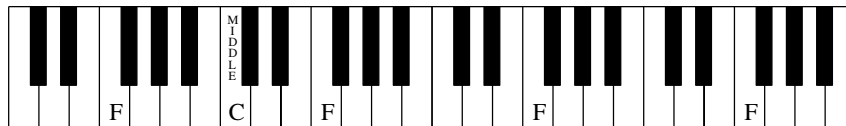
\_\_\_\_\_

**Look/Listen:** The piano keyboard can help you understand treble clef and pitch. The pitches on the staff match a set of white keys on the piano.



Each note written on the treble staff matches the sound of a piano key. Notice the groups of black keys, two then three, in between the white notes. This pattern repeats many times. Remembering this pattern will help you find a note on the piano.

**Match:** Put the letter on the correct key(s) of the piano keyboard shown below. “F” has been done for you.



F                      A                      C                      E

**Bonus:** In the treble clef, what do the letters listed above represent?

\_\_\_\_\_

**Musical Spelling Test in the Treble Clef:** Figure out the words created by the notes below.

